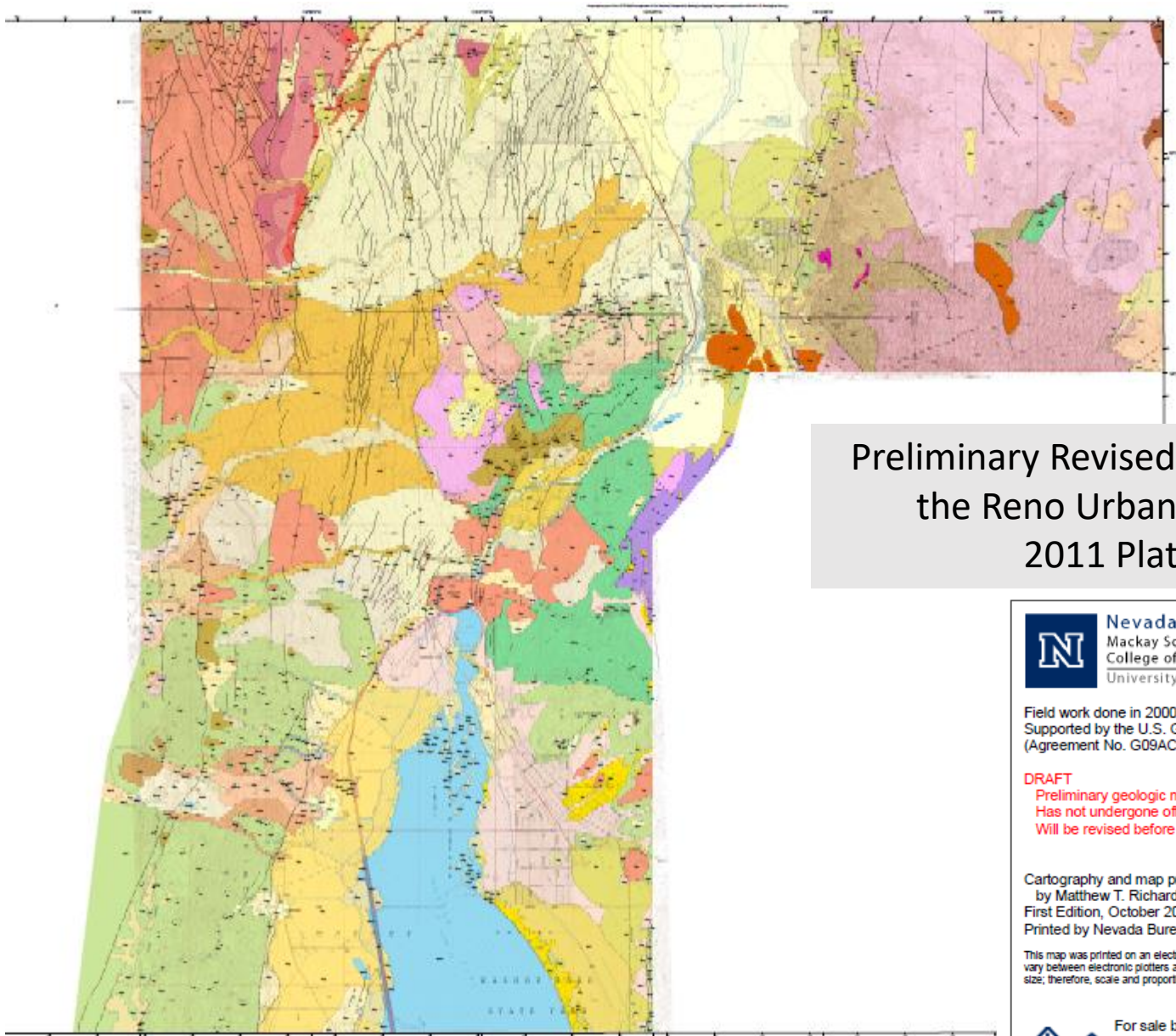


Ascente Faults Reference Materials

Contents

1. Nevada Bureau of Mines Map
2. NBM Map for Ascente area
3. Lumos Tentative Map (2017)
4. Gasch R-S Line Locations
5. Trenches in Sierra Village
6. Trenches in Donner Village
7. First Final Map lots
8. Soil map (per Saunders)



Preliminary Revised Geologic Maps of the Reno Urban Area, Nevada 2011 Plate 2 of 3



Nevada Bureau of Mines and Geology
Mackay School of Earth Sciences and Engineering
College of Science
University of Nevada, Reno

Field work done in 2000–2010
Supported by the U.S. Geological Survey STATEMAP Program
(Agreement No. G09AC00116 and G10AC00220)

DRAFT
Preliminary geologic map
Has not undergone office or field review
Will be revised before publication

Cartography and map production in ESRI ArcGIS v9.3 (ArcGeology v1.3)
by Matthew T. Richardson, Irene Seelye, and Jennifer Mauldin
First Edition, October 2011
Printed by Nevada Bureau of Mines and Geology

This map was printed on an electronic plotter directly from digital files. Dimensional calibration may vary between electronic plotters and X and Y directions on the same plotter, and paper may change size; therefore, scale and proportions may not be exact on copies of this map.



For sale by:
Nevada Bureau of Mines and Geology
2175 Raggio Pkwy.
Reno, Nevada 89512
ph. (775) 682-8766
www.nbmg.unr.edu; nbmg@unr.edu

2015
2118
2192

This product is available free on our website

PRELIMINARY REVISED GEOLOGIC MAPS OF THE RENO URBAN AREA, NEVADA

Alan R. Barnhill¹, Christopher D. Henry², and Jerome P. Walker³

With contributions from: John W. Bell⁴, Patrick M. Chabasso⁵, Craig M. DeFord⁶, Larry J. Gaudel⁷, R. Kyle Houser⁸, Anne H. Tveder⁹, and Michael C. Wetland¹⁰

Plate 2 of 3

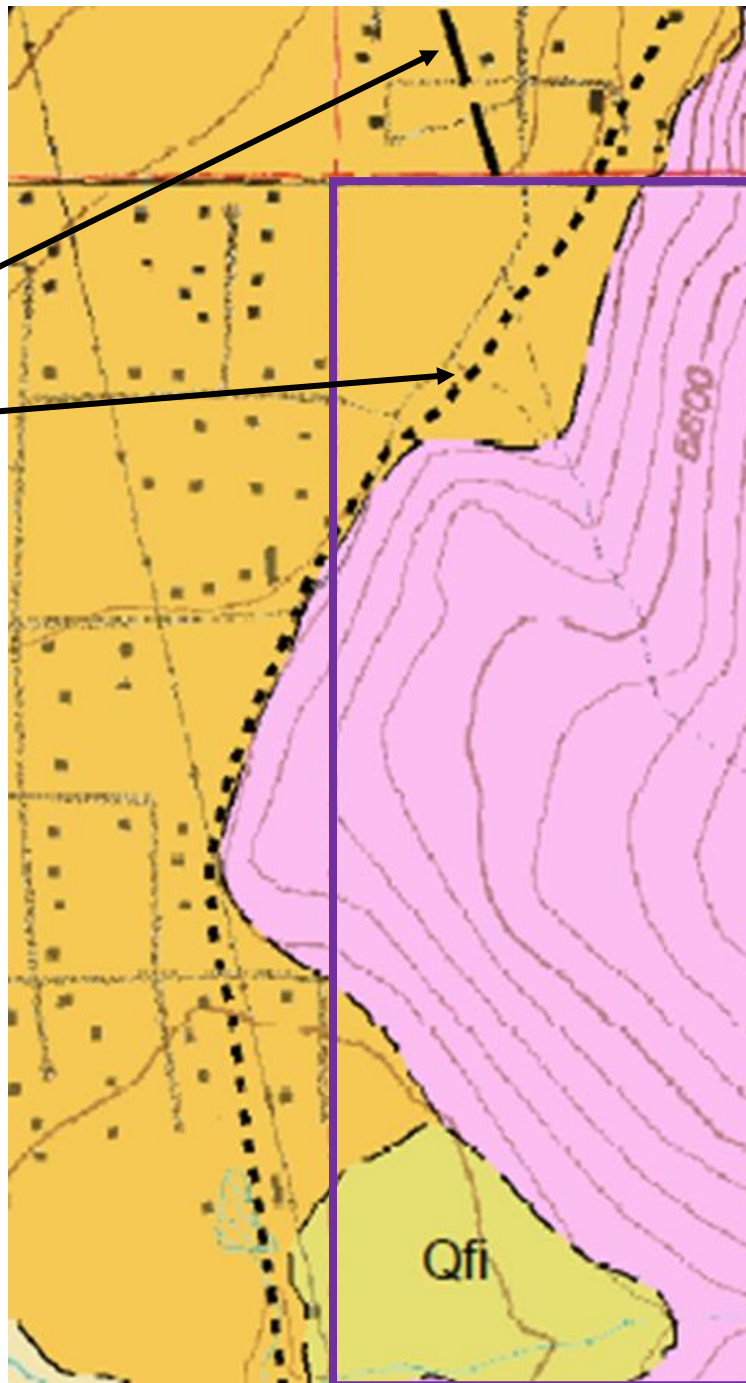
¹Nevada Bureau of Mines and Geology; ²Department of Geological Sciences, University of Nevada, Reno; ³Consulting Geologist; ⁴Washoe County Department of Water Resources; ⁵2011

NBMG 2011 FAULT MAP

ASCENTE PROPERTY
(APPROXIMATE)

UNNAMED FAULT

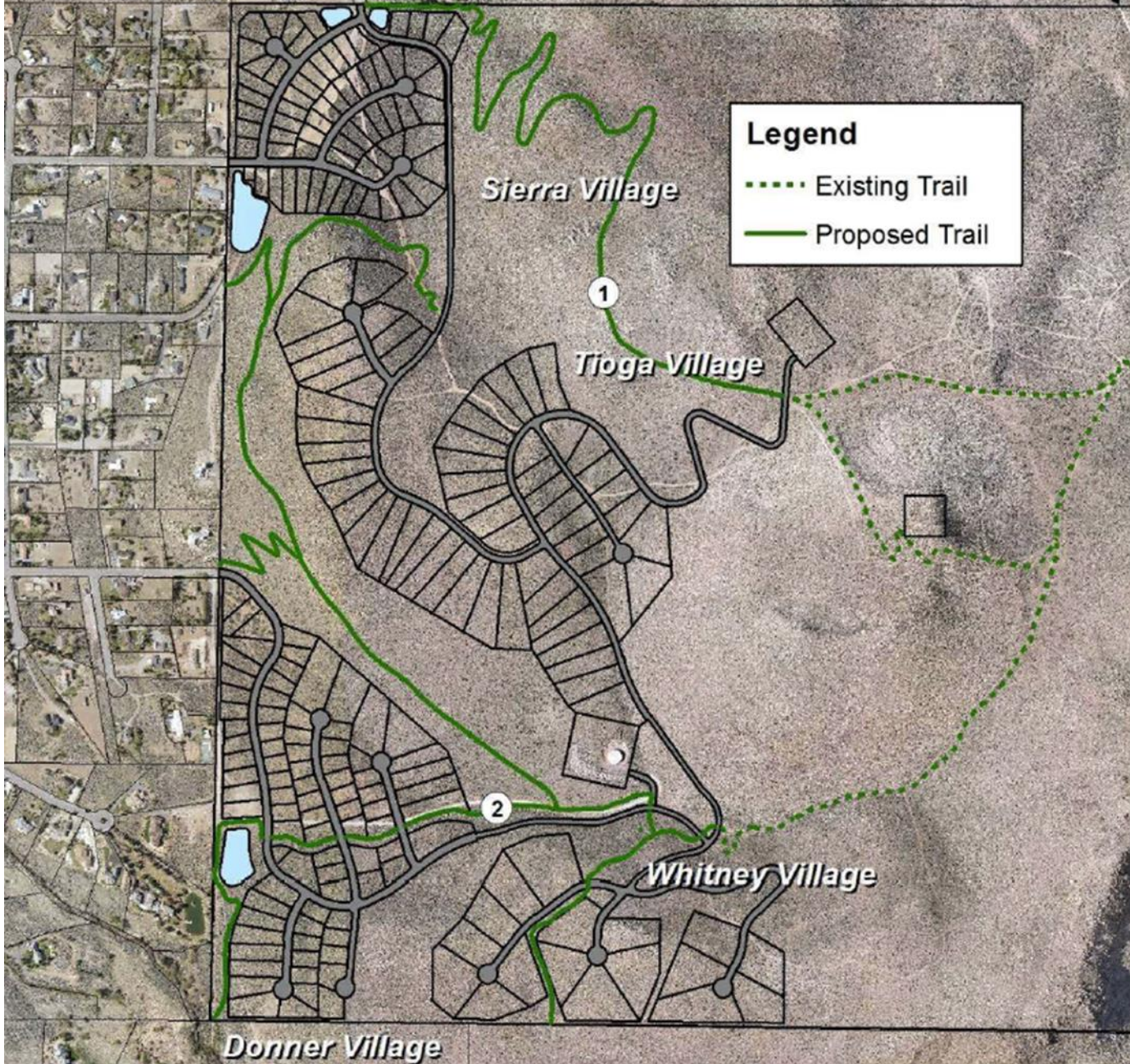
GALENA CREEK FAULT



Qfi

5500

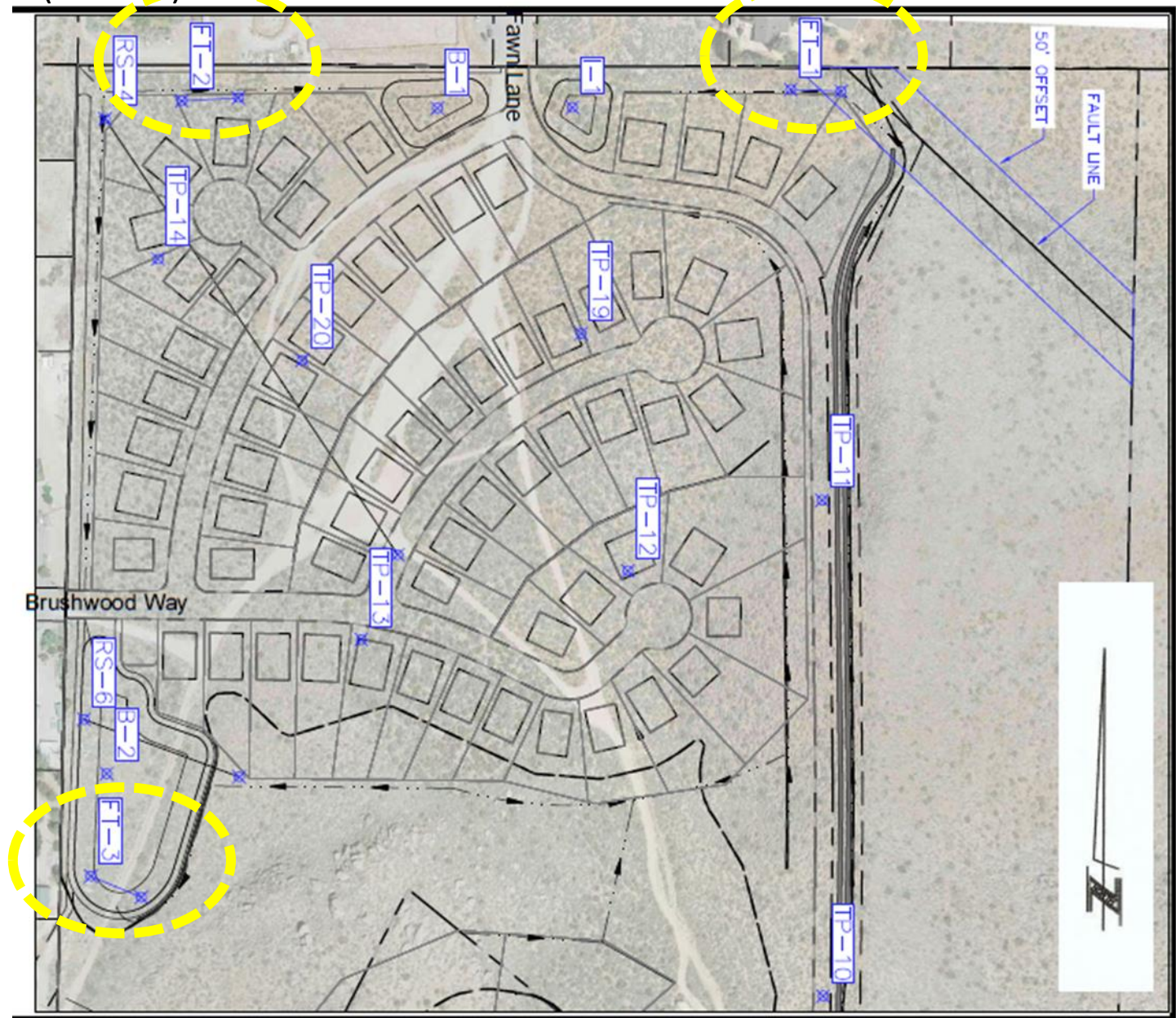
ASCENTE TENTATIVE MAP FROM 2017



GASH REPORT: REFRACTIVE-
SEISMIC LINE LOCATIONS
(SELECTED BY LUMOS)



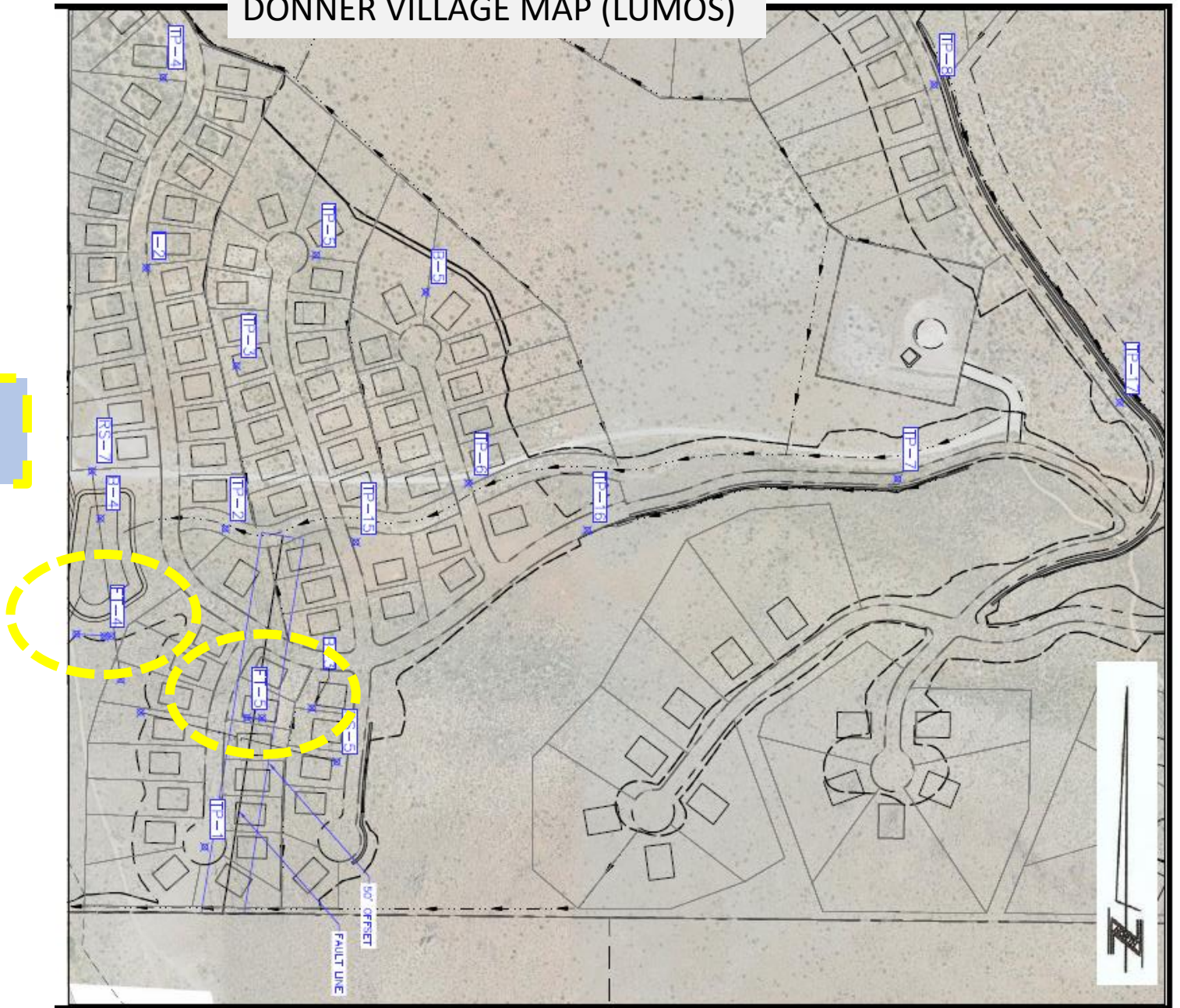
SIERRA VILLAGE MAP (LUMOS)



**FAULT
TRENCHES**

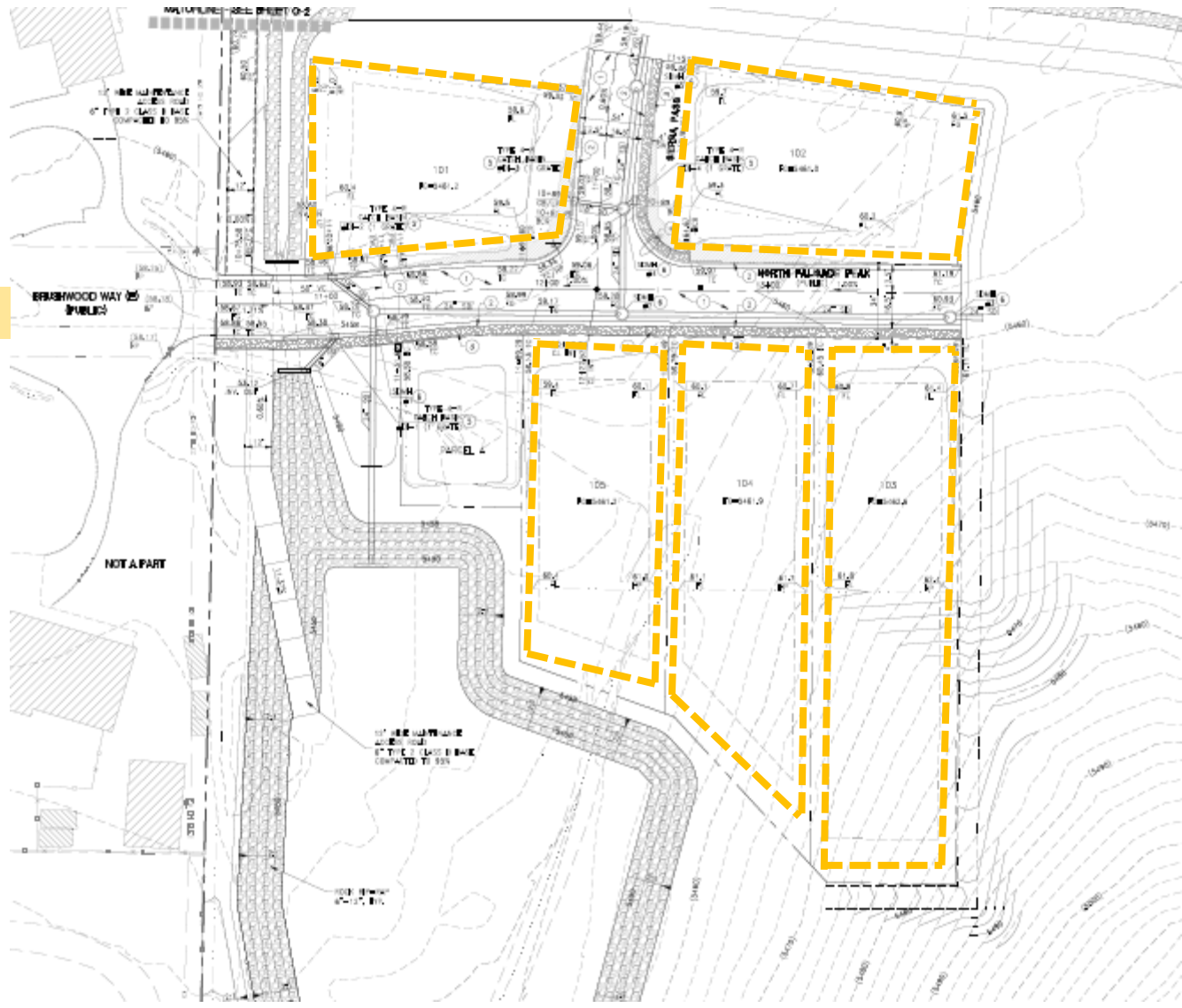
DONNER VILLAGE MAP (LUMOS)

FAULT
TRENCHES



First Final Map filed for Ascente: five lots at the end of Brushwood Way

BRUSHWOOD



SAUNDERS REPORT: SOILS TYPES

