

THE CANYONS/ CANYON'S EDGE WATERTANKS



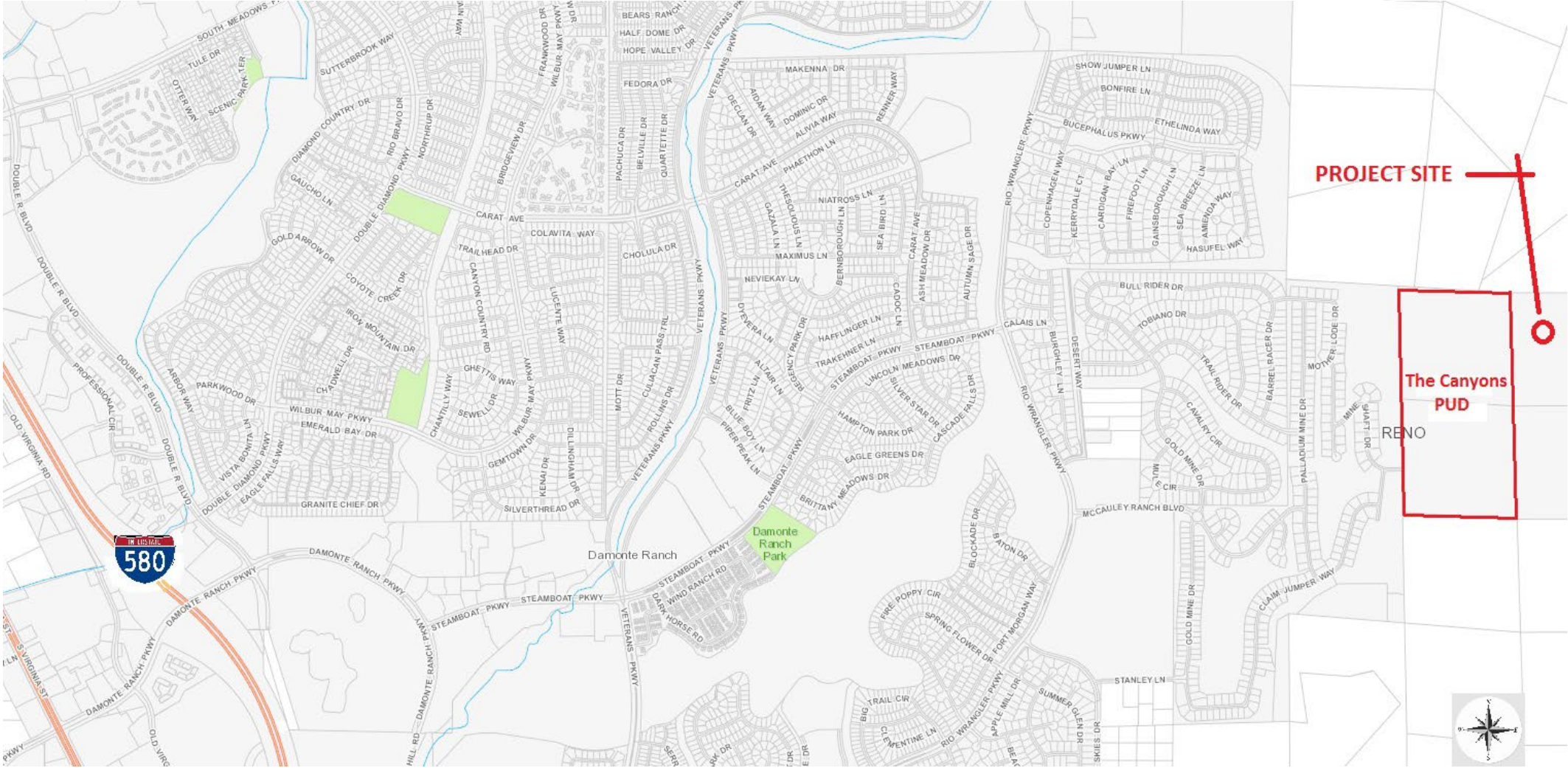
RENO PLANNING COMMISSION

APRIL 20, 2022

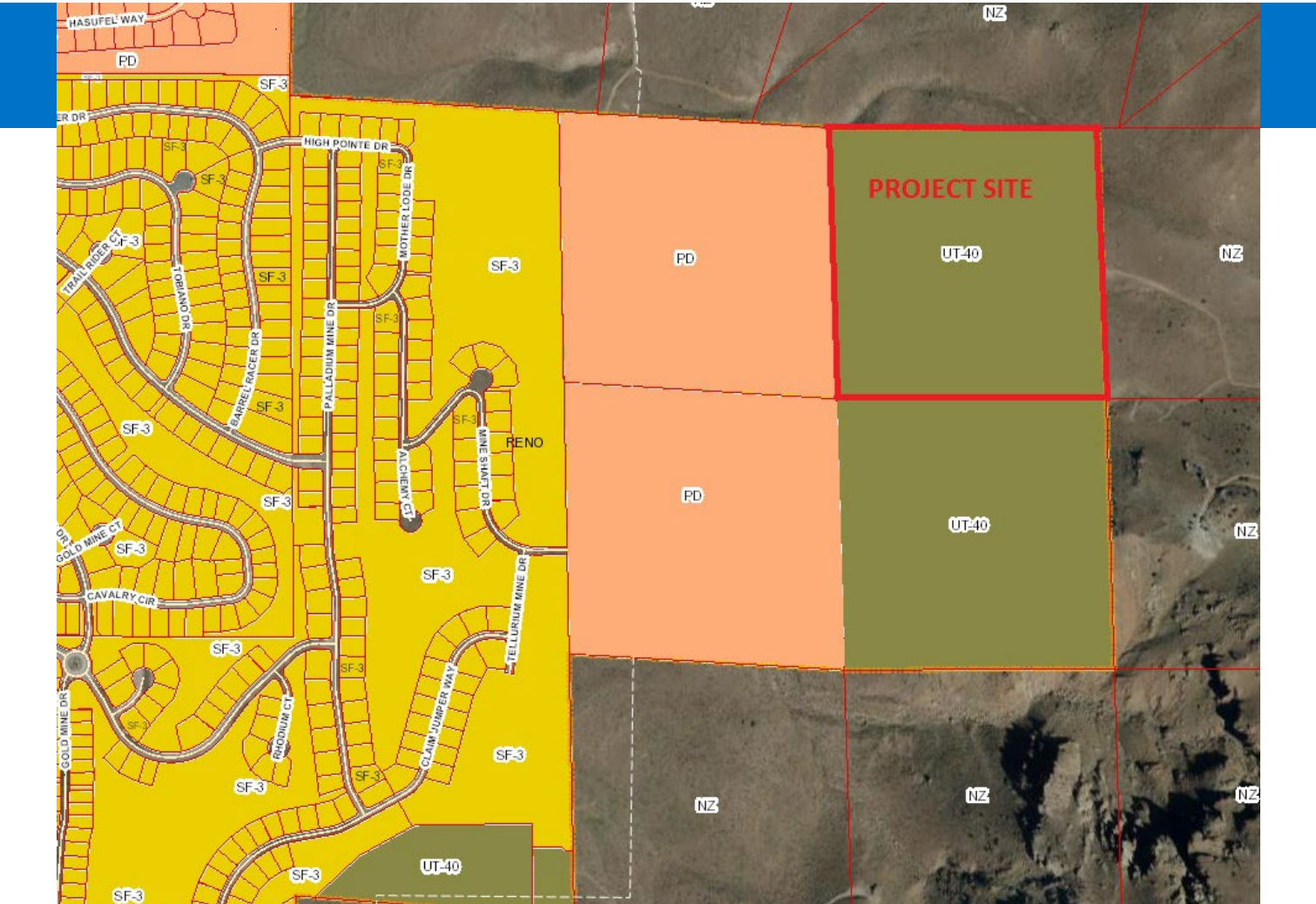
- A **Major Site Plan Review** to allow for cuts greater than 20 feet/fills greater than 10 feet in support of two new water tanks.

PROJECT REQUEST

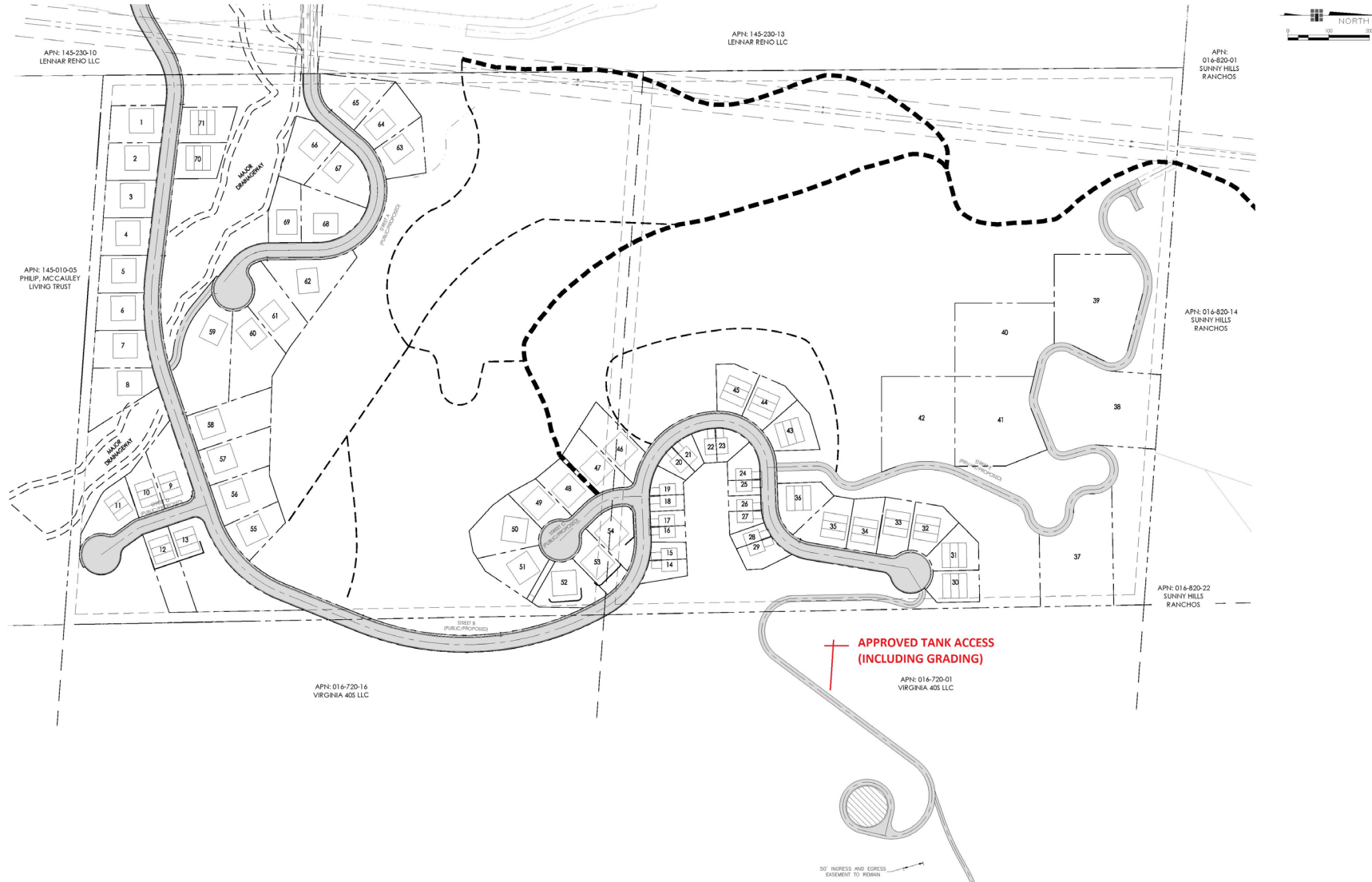
PROJECT LOCATION



ZONING



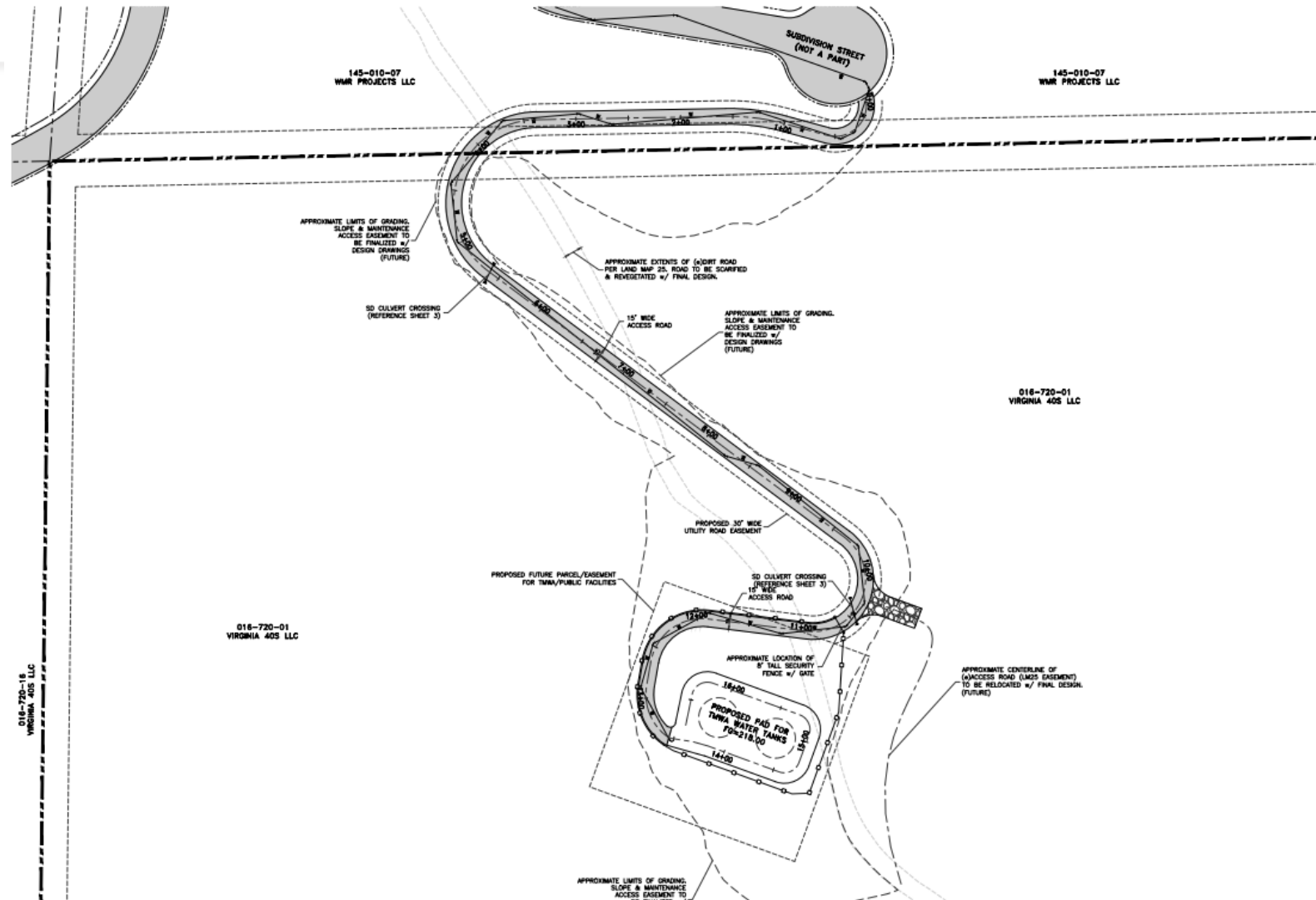
APPROVED CANYONS TENTATIVE MAP



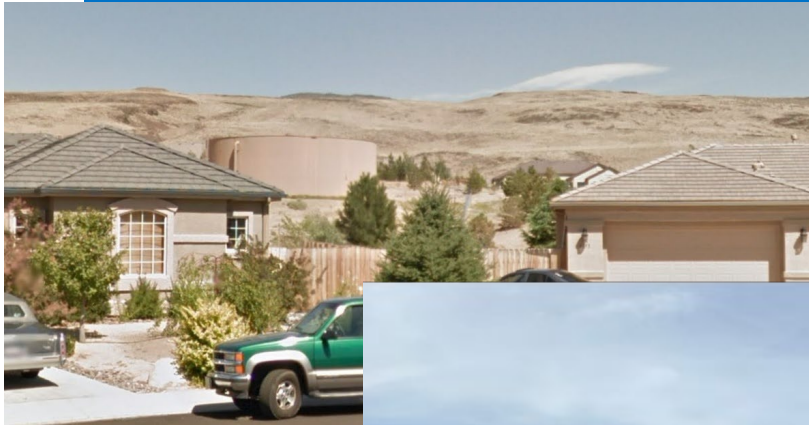
PROJECT SUMMARY

- Refinement of water tank design presented with previously approved tentative map.
- The SPR will allow for the proposed grading (cuts > 20 feet/fills > 10 feet).
- Two 125,000 gallon steel tanks. – 16 feet in height.
- Tanks to be painted to blend with surrounding terrain.
- Tanks are largely “tucked” behind ridgeline and largely screened from view.

SITE PLAN



TYPICAL TANK EXAMPLES





Mike Railey

Christy Corporation, Ltd.

Jason Gilles, P.E.

TEC Engineering Consultants, Inc.